

A Collection of 4 Bedroom
Executive Homes



Valley
VIEW



Computer generated image is indicative only



Introducing Valley View

A collection of 4, four bedroom executive homes in the village of Trelewis overlooking the Taff Bargoed Valley.

Inspired by traditional architecture, each of the executive four bedroom homes have been designed with the utmost attention to detail with South East facing back gardens. Perfect for young professionals and families.

Register your interest at [Brinsons](#).



Plot 1

Valley View, Trelewis, CF46 6DN

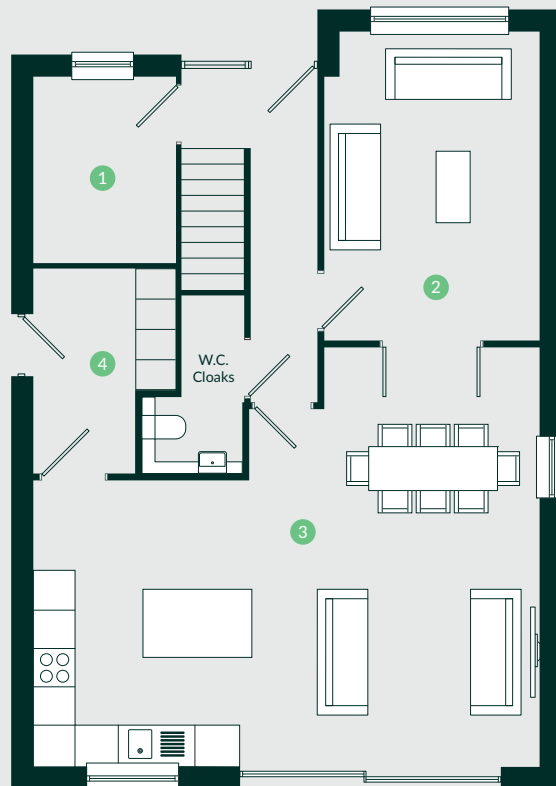
4 Bedrooms

3 Bathrooms

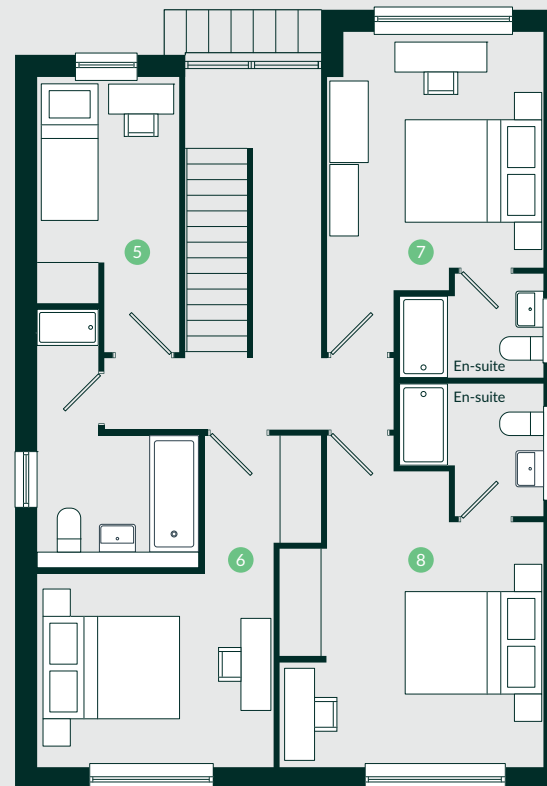
152.0sqm/1640sqft

Whilst every effort has been made to ensure that the information contained in this brochure is correct, it is designed specifically as a guide and Hawfinch reserves the right to amend the specification as necessary and without notice. This does not constitute or form any part of a contract of sale.

Ground Floor



First Floor



1. Office	1.9m	2.7m
2. Living	3.1m	4.5m
3. Kitchen/Dining	7.2m	6.1m (max)
4. Laundry	1.9m	3.0m
5. Bedroom 1	1.9m	2.7m
6. Bedroom 2	3.4m	2.8m
7. Bedroom 3	3.1m	3.4m
8. Bedroom 4	3.7m	3.6m

hawfinchhomes.com



Computer generated image is indicative only



Plot 2, 3 & 4

Valley View, Trelewis, CF46 6DN

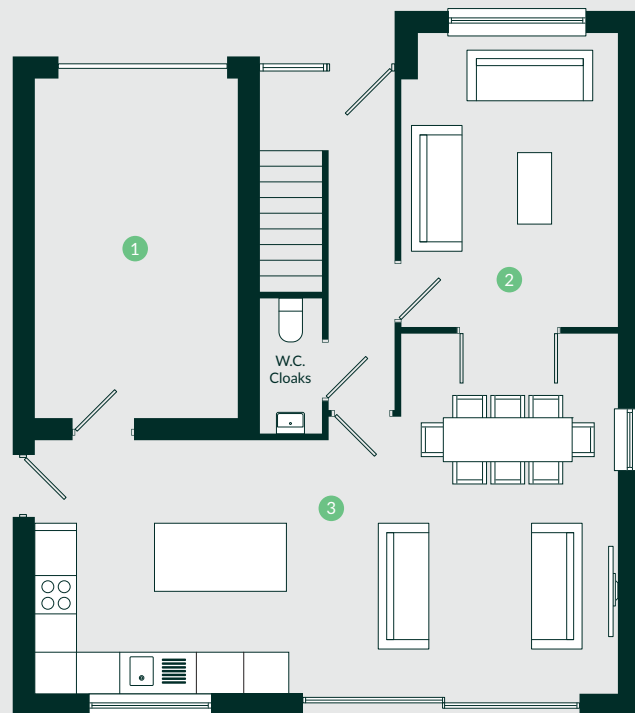
4 Bedrooms

3 Bathrooms

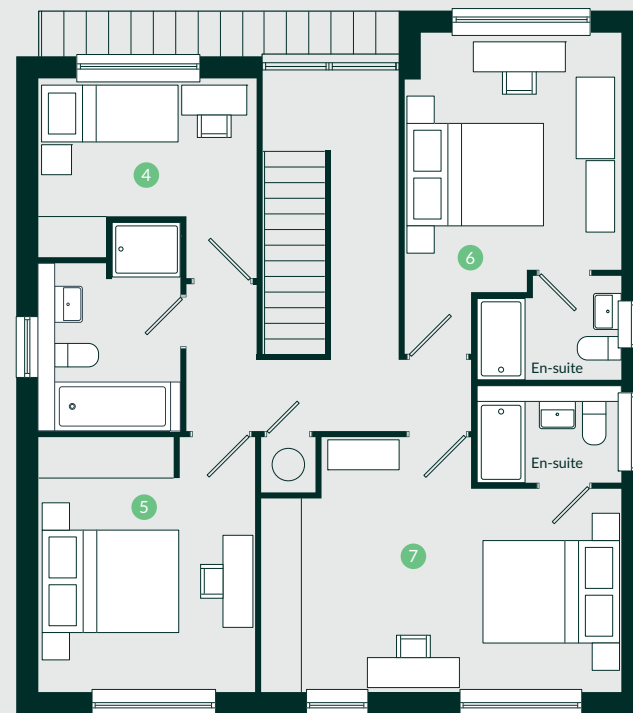
160.0sqm/1722sqft

Whilst every effort has been made to ensure that the information contained in this brochure is correct, it is designed specifically as a guide and Hawfinch reserves the right to amend the specification as necessary and without notice. This does not constitute or form any part of a contract of sale.

Ground Floor



First Floor



1. Garage	3m	5m
2. Living	3.1m	4.3m
3. Kitchen/Dining	8.5m	5.3m (max)
4. Bedroom 1	3.2m	2m
5. Bedroom 2	3.1m	3.2m
6. Bedroom 3	3.1m	3.4m
7. Bedroom 4	5.2m	3.0m

hawfinchhomes.com



Computer generated image is indicative only

Features include;

Oversized double glazed units throughout with large sliding patio doors

Kutchenhaus luxury kitchens and integrated appliances

Spots to all bathrooms, halls, landings and master bedrooms

Twyford sanitary-ware with Bristan taps

Mira mixer showers with Porcelanosa luxury tiles to splash backs and wet rooms

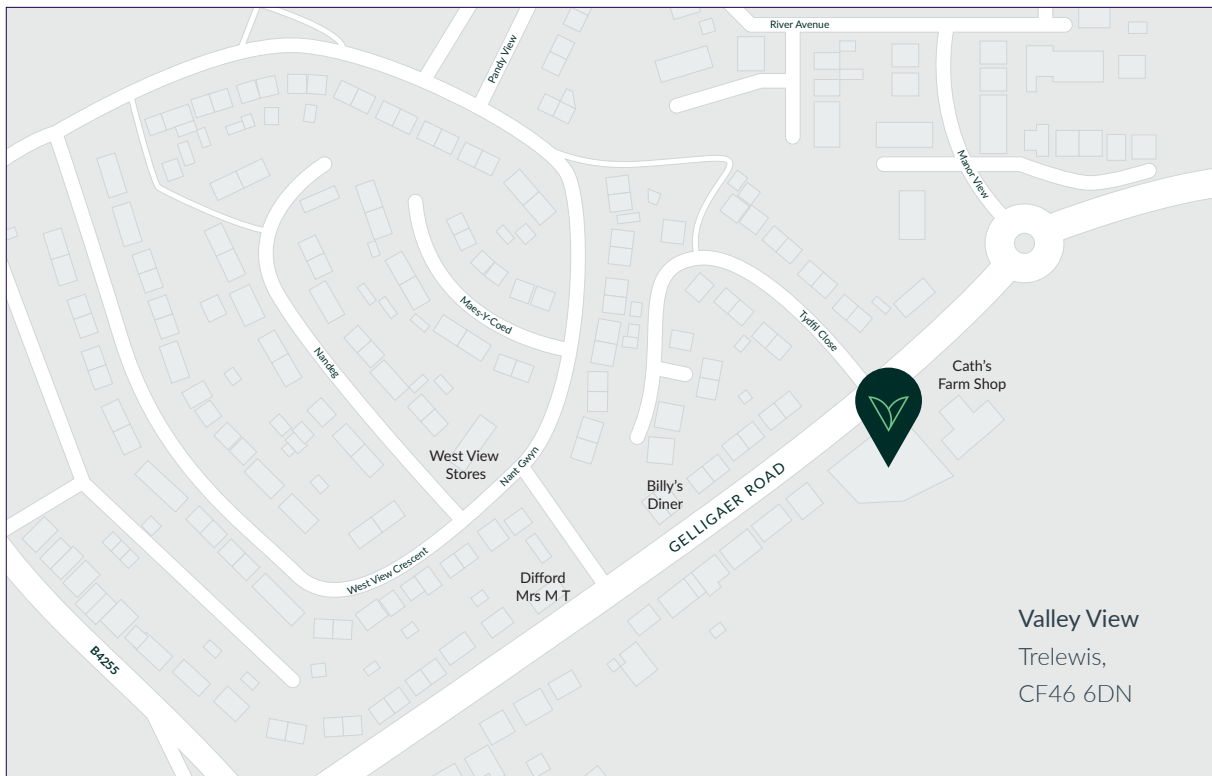
Modern efficient gas central heating with 250L hot water cylinders, perfect for large families

EV chargers for electric vehicle owners

Sectional electric garage doors with remote opening (Plots 2,3 & 4)

Integrated sprinkler system

Smart intruder alarm system with wiring for future external Camera system, should the homeowner wish to install



Valley View
 Trelewis,
 CF46 6DN



Please note, the masterplan and development layout shown are digital illustrations only and may not accurately depict elevation materials, gradients, landscaping or street furniture. Hawfinch reserves the right to amend the layout and specification as necessary and without notice. Please ask Hawfinch or our agent Brinsons for further details.



Computer generated image is indicative only

Register your interest at:

BRINSONS

www.brinsons.co.uk

029 2086 7711

Hawfinch.[™]

hawfinchhomes.com

Whilst every effort has been made to ensure that the information in this brochure is correct, it is designed specifically as a guide and Hawfinch reserve the right to amend the specification as necessary and without notice. This does not constitute or form any part of a contract or sale.